

TECHNICAL REQUIREMENT

- 1.DESIGN ACCORDING TO BS EN 13789;
- 2.FACE TO FACE ACCORDING TO BS EN558-1;
- 3.FLANGE ACCORDING TO BS EN1092-2:1997;
- 4.PRESSURE TEST ACCORDING TO BS EN 12266

SPECIFICATION

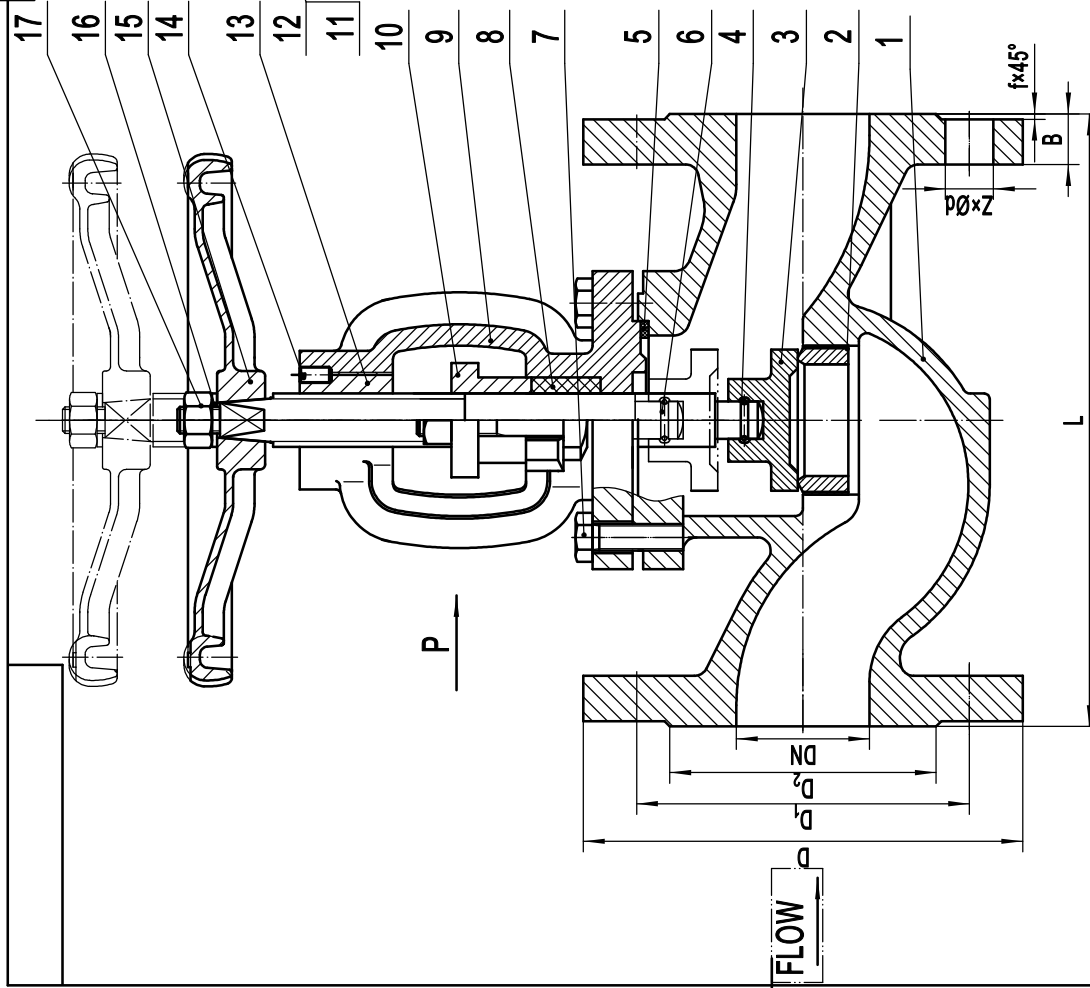
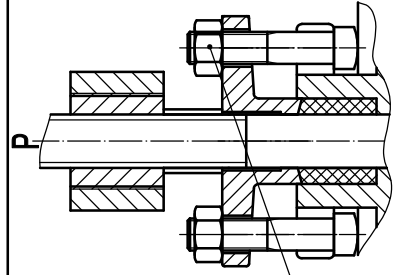
DN	DN15-300	
NORMAL PRESSURE	1.6MPa	
SUITABLE TEMP	≤200 °C	
TEST PRESSURE MPa	SEAL(WATER)	1.8
	SHELL(WATER)	2.4
MEDIUM	BACK SEAL	1
	WATER, STEAM, OIL	

DN	L	D	D _f	D ₁	D ₂	B-f	Z-Ød
15	130±2	95	65	46	14-2	4-Ø14	
20	150±2	105	75	56	16-2	4-Ø14	
25	160±2	115	85	65	16-2	4-Ø14	
32	180±2	140	100	76	18-2	4-Ø19	
40	200±2	150	110	84	18-2	4-Ø19	
50	230±2	165	125	99	20-2	4-Ø19	
65	290±2	185	145	118	20-2	4-Ø19	
80	310±2	200	160	132	22-2	8-Ø19	
100	350±2	220	180	156	24-2	8-Ø19	
125	400±2	250	210	184	26-2	8-Ø19	
150	480±2	285	240	211	26-2	8-Ø23	
200	600±2	340	295	266	30-2	12-Ø23	
250	730±3	405	355	319	32-3	12-Ø28	
300	850±3	460	410	375	32-3	12-Ø28	

NO.	CODE	NAME	QTY	MATERIAL	NOTE
9		BONNET		GGG40	
8		PACKING		EXPANDED GRAPHITE	
7		BOLT		35#STEEL	
6		STEM		2Cr13(G-X20Cr14)	
5		GASKET		STEEL+EXPANDED GRAPHITE	
4		STAINLESS STEEL WIRE		304(G-X6CrNi189)	
3		DISC		Z2Cr13(G-X20Cr14)/A105	DN15-65(2Cr13), DN80-300(A105)
2		BODY SEAL RING		Z2Cr13(G-X20Cr14)	
1		BODY		GG25/GGG50	

NO.	CODE	NAME	QTY	MATERIAL	NOTE
					1 PC TOTAL
					WEIGHT

YUANDA VALVE					YUANDA VALVE GROUP CO.,LTD.
GLOBE VALVE					
					16-15-300.00



NO.	CODE	NAME	QTY	MATERIAL	NOTE
17		NUT		25#STEEL	
16		FLAT WASHER		STEEL	
15		HANDWHEEL		GGG40	
14		SLOTTED FLAT END SET SCREW		35#STEEL	
13		STEM NUT		ZQAI 9-4	
12		NUT		25#STEEL	
11		T SHAPE OF BOLT		35#STEEL	
10		GLAND		GG25/GGG50	