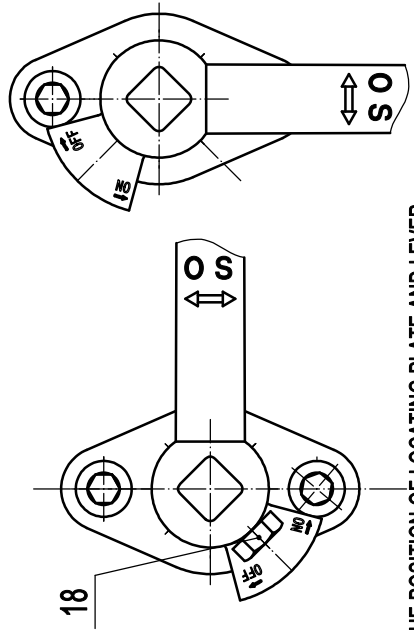
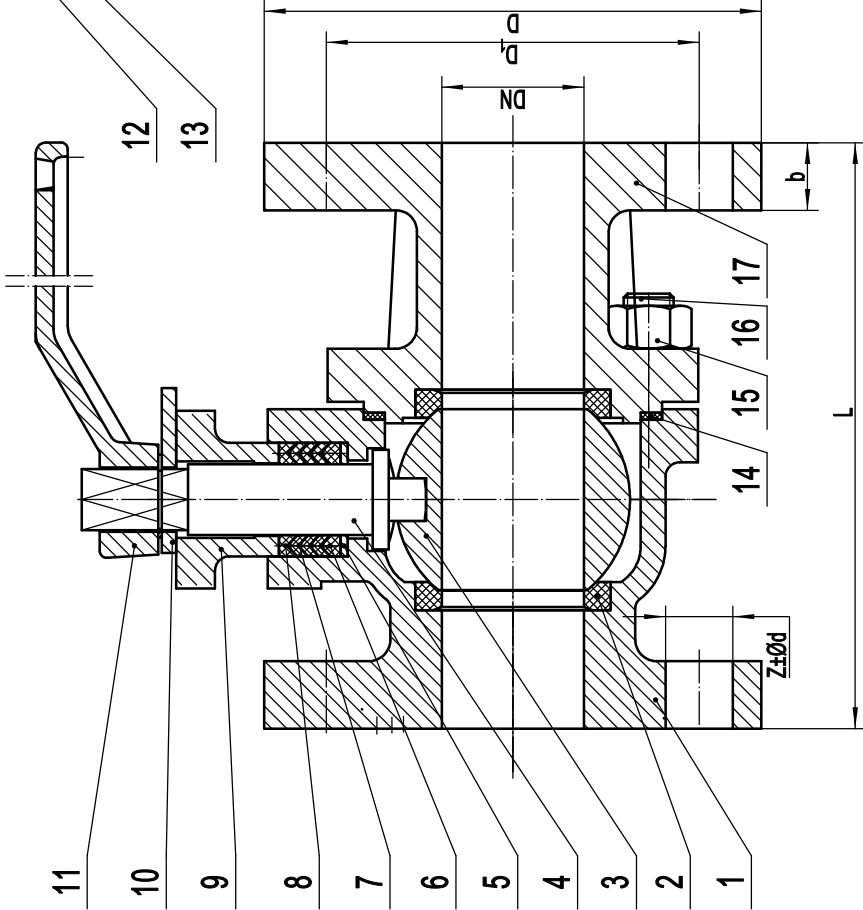


SPECIFICATION

DN	DN40-200
PN	10K
TEMPERATURE°C	-10~200
TEST PRESSURE MPa	SEAL(WATER) 1.6 SHELL(WATER) 2.1
MEDIUM	WATER,STEAM,OIL

TECHNICAL REQUIREMENT

1. FLANGED ENDS ACCORDING TO JIS B2339;
2. TEST ACCORDING TO KS B 2304.



THE POSITION OF LOCATING PLATE AND LEVER UNDER THE CONDITION OF FULLY OPEN.

THE POSITION OF LOCATING PLATE AND LEVER UNDER THE CONDITION OF FULLY CLOSED.

NO.	CODE	NAME	QTY	MATERIAL	REMARK
18		BOLT		35# STEEL	
17		BODY		CAST/DUCTILE IRON	
16		STUD BOLT		35# STEEL	
15		NUT		25# STEEL	
14		BONNET GASKET		PTFE	
13		CIRCLIP		SPRING STEEL (65Mn)	
12		SCREW		35# STEEL	
11		LEVER		DUCTILE IRON	
10		LIMITED BLOCK		Q235 STEEL	
9		PACKING GLAND		DUCTILE IRON	
8		PACKING		PTFE	
7		PACKING		PTFE	
6		PACKING		PTFE	
5		WASHER		Q235 STEEL	
4		STEM		2Cr13	
3		BALL		SS304	
2		SEAL RING		PTFE	
1		BODY		CAST/DUCTILE IRON	

DN	ITEM	L	D	h	b	Z-Ød
40		165	140	105	19	4-Ø19
50		180	155	120	20	4-Ø19
65		190	175	140	20	4-Ø19
80		200	185	150	22	8-Ø19
100		230	210	175	22	8-Ø19
125		300	250	210	22	8-Ø23
150		340	280	240	23	8-Ø23
200		450	330	290	26	12-Ø23

YUANDA VALVE GROUP
CO., LTD.
BALL VALVE
(JIS)BA 10K-40-200.00