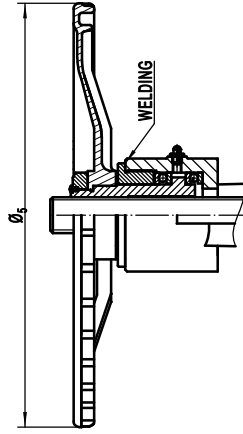
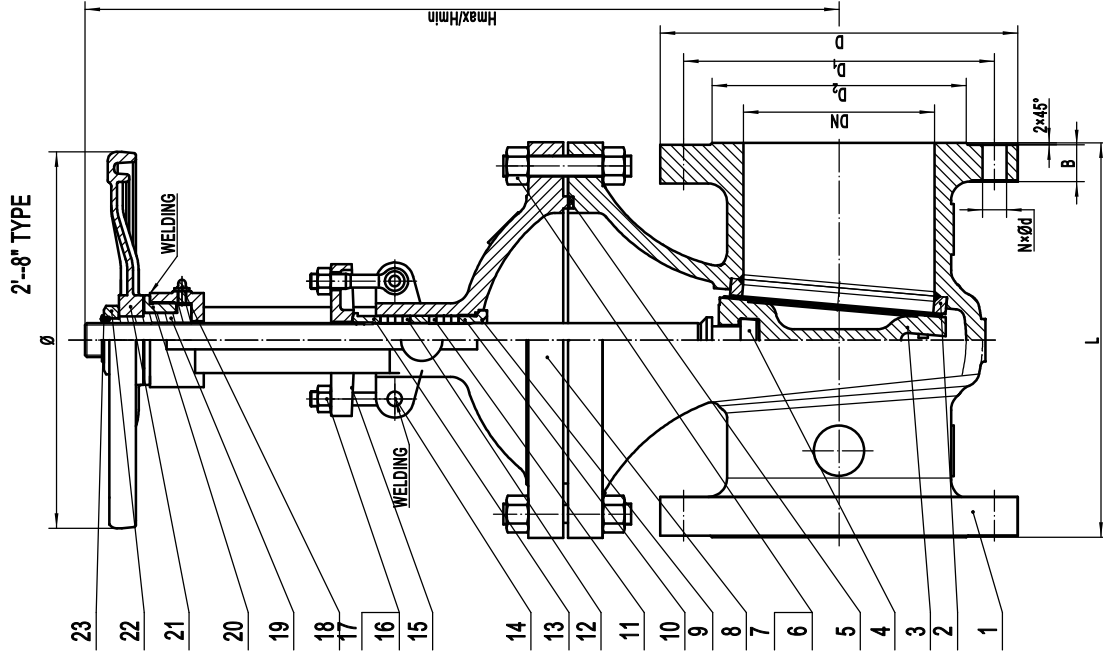


TECHNICAL REQUIREMENTS

- DESIGN: API 600;
- FACE TO FACE: ASME B 16.10;
- FLANGE: ANSI B 16.5;
- TESTING: API 598;
- PRESSURE/TEM: ASME B 16.34.

PERFORMANCE SPECIFICATION

SIZE	2"-24"	
PRESSURE	300LB	
TEMP	-29/425	
TEST/MPa	SHEEL	7.7 (WATER)
	SEALING	5.7 (WATER)
MEDIUM	BACKSEAT	5.7 (WATER)
	LOW AIR PRESSURE	0.7 (AIR)
	WATER/STEAM/OIL	



10 1/2"-24" TYPE

ITEM SIZE	L	DN	D ₂	D ₁	D	NxØd	B	Hmax/Hmin	Ø
2"	216±1.5	Ø51	Ø92.1	Ø127	Ø165	8-Ø19	20.7	408/340	Ø200
2 1/2"	241±1.5	Ø64	Ø104.8	Ø149.2	Ø190	8-Ø22.5	23.9	460/386	Ø200
3"	282±1.5	Ø77	Ø127	Ø168.3	Ø210	8-Ø22.5	27	530/435	Ø240
4"	305±1.5	Ø102	Ø157.2	Ø200	Ø255	8-Ø22.5	30.2	619/502	Ø280
5"	381±1.5	Ø127	Ø186	Ø235	Ø280	8-Ø22.5	33.4	748/605	Ø320
6"	403±1.5	Ø153	Ø215.9	Ø269.9	Ø320	12-Ø22.5	35	826/660	Ø360
8"	419±1.5	Ø204	Ø269.9	Ø330.2	Ø380	12-Ø25.5	39.7	1038/807	Ø400
10"	457±1.5	Ø254	Ø323.8	Ø387.4	Ø445	16-Ø28.5	46.1	1247/972	Ø450
12"	502±2	Ø305	Ø381	Ø450.8	Ø520	16-Ø32	49.3	1438/1107	Ø560
14"	762±3	Ø337	Ø412.8	Ø514.4	Ø585	20-Ø32	52.4	1595/1230	Ø640
16"	838±3	Ø388	Ø466.9	Ø571.5	Ø650	20-Ø35	55.6	1797/1363	Ø720
18"	914±3	Ø432	Ø533.4	Ø628.6	Ø710	24-Ø35	58.8	1994/1530	Ø800
20"	991±3	Ø483	Ø584.2	Ø685.8	Ø775	24-Ø35	62	2204/1687	Ø950
24"	1143±3	Ø585	Ø692.2	Ø812.8	Ø915	24-Ø41.5	67.3	2605/1984	Ø1100
		23	NAIL			45 STEEL			
		22	LOCK NUT			ASTM A29M 1020			
		21	HANDWHEEL			ASTM A536 65-45-12			
		20	BEARING GLAND			ASTM A29M 1020			
		19	STEM NUT			ASTM A439 D-2			
		18	OIL CUP			H62			
		17	NUT			ASTM A194 2H			
		16	BOLT			ASTM A193 B7			
		15	PACKING PLATE			ASTM A216 WCB			
		14	PIN			35 STEEL			
		13	PACKING BUSH			ASTM A276 410			
		12	PACKING RING			ASTM A276 304+Graphite			
		11	RING			ASTM A276 410			
		10	PACKING			RBTN2-600			
		9	BACKSEAT			ASTM A276 410			
		8	BONNET			ASTM A216 WCB			
		7	STUD			ASTM A193 B7			
		6	NUT			ASTM A194 2H			
		5	BONNET GASKET			ASTM A276 304+Graphite			
		4	STEM			ASTM A276 T410			
		3	DISC			ASTM A216 WCB			
		2	SEAT			ASTM A105			
		1	BODY			ASTM A216 WCB			
		NO.	NAME			QTY.	MATERIAL		

YUANDA VALVE
GROUP CO.,LTD
API600 GATE VALVE
API(B) GA-300LB 2"-24"